

KOREA YELLOW PAGES www.yellowpage-kr.com 2010. 4.

CE
0120

S&G BIOTECH INC.
Being an **Innovative Leading Edge**
in **Medical Device** Industry
for **Better World.**



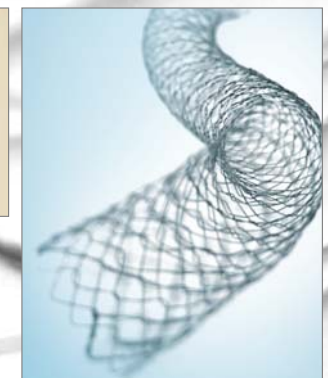
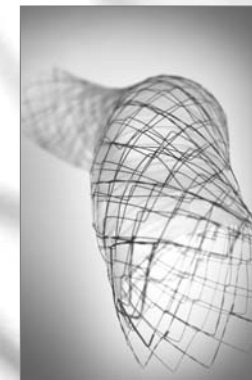
S&G Biotech Inc.

SK Apt. Factory #301, 223-28 Sangdaewon-Dong, Jungwon-Gu, Seongnam-Si, Gyeonggi-Do 462-705 Korea.

Tel. 82-31-748-6625 **Fax.** 82-31-748-6620 **e-mail.** sng@sngbio.com **Homepage.** www.sngbio.com

EGIS

The Gastrointestinal Stents



EGIS, the Stents for the Esophageal
the Biliary
the Pyloric
the Colorectal

S&G Biotech Inc...

will be the Best Company in your choice
with the professionalism for the products
and the services for the medical industry.

 **BIOTECH INC.**
www.sngbio.com

FEATURES & BENEFITS

EGIS BILIARY STENT

EGIS ESOPHAGEAL STENT

EGIS PYLORIC STENT

EGIS COLORECTAL STENT

DELIVERY SYSTEM

SPECIALIZED R&D FACILITY

- **Research Network** : The technological infrastructure network of hospitals, universities, laboratories, corporations and government.
- **The original technologies** : The obtained technologies through government sponsored project is being the basic for new development and invention.
- **Analysis Capacity** : The Optimum analysis system for development and application of products
- **New Materials** : Functional product development and Stabilization through utilizing organic, inorganic and metal hybrid materials

NOBLE PROCESSING TECHNIQUE

- **Polishing Technology** : the surface processing technology on the nitinol wire of the stents is being dedicated to the stabilization with preventing wire cut and tumor growth.
- **Hydrophilic Coating Technology** : the hi-tech coating technology is enhancing the adoptability of application on a new development
- **Customer Satisfaction Processing** : The fast feed back for the customer request and customer satisfaction is a major feature of S&G Biotech Inc.
- **Specialist Group** : The specialist group for each product line is efficiently coping with the request of customers and showing

GREATEST REGULATORY SYSTEM

- **ERP** : Scientific quality control through ERP System
- **X-ray Inspection** : Scrutinizing product inspection procedures before commencing actual production Inspection of final products with X-ray equipments
- **Product Responsibility System** : Product responsibility system for rapidly processing and catering customer complaints

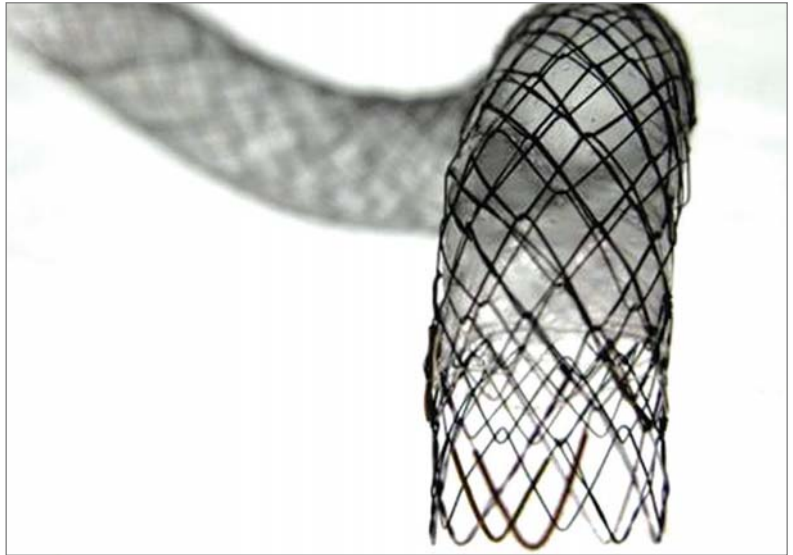
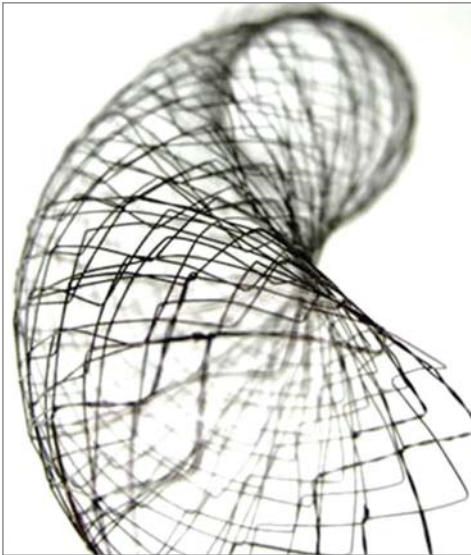
Company History

- 2000**
 - The establishment as R&D Lab in Asan Medical Center
 - Acquirement of the Certificate for Venture Company (Technology Evaluation Company)
- 2003**
 - Acquirement of Certificate of Venture Company (New technology company)
 - Development of Micro Catheter (Radiomate)
- 2004**
 - Conducting the Project 'Next-generation Research' sponsored by the Ministry of Commerce, Industry and Energy
 - Patent in China for Stent Graft
 - Patent in US for Stent Graft
- 2005**
 - Clinical Trial for Stent-Graft
- 2006**
 - Development of EGIS Stent
 - Acquiring the CE Mark for Stent Products
- 2007**
 - Start of International Business
 - Acquirement of the first KDFA for class-4 Stent Graft
- 2008**
 - CE approval (Extension) of EGIS Biliary / Pyloric / Colorectal stent
 - Completion of Technical Transferring (TAA) to Datascope(MAQUET)
- 2009**
 - Starting Registration for JFDA (EGIS)
 - Starting Registration for SFDA
 - Starting Registration for FDA (EGIS)

EGIS

The Gastrointestinal Stents

Superior Conformability & Flexibility



THE CONFORMABILITY & FLEXIBILITY of a stent can be one of essential feature in enhancing biocompatibility. But it is only one advantage of the EGIS' features. Bringing high Conformability & Flexibility while it is bearing the appropriate Radial Force for the lesions is one superior feature of the EGIS to any other stents.

Variable Choice - 4 Types

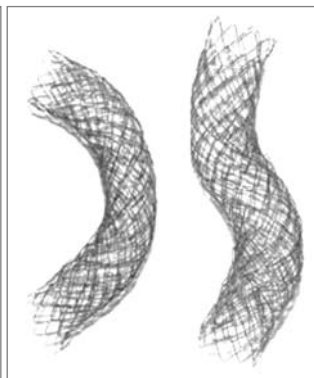
THE VARIABLE TYPES OF EGIS is supporting a doctor's decision making on a procedure and the preference. All EGIS except the esophageal stent, are consisting of Single Bare(SB), Single Covered(SC), Double Bare(DB), and Double Covered(DC), and which can be applicable on following different needs.



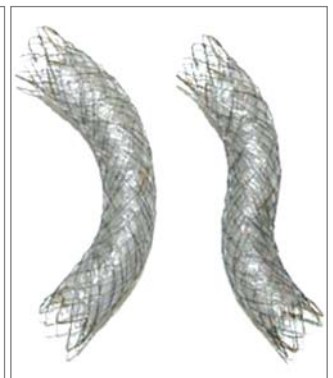
Single Bare(SB)



Single Covered(SC)



Double Bare(DB)

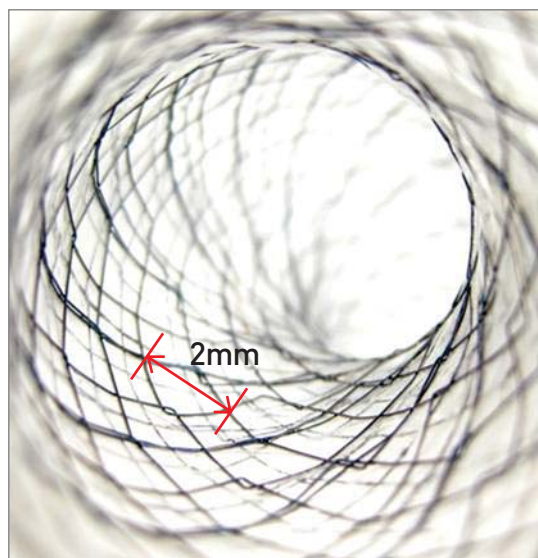
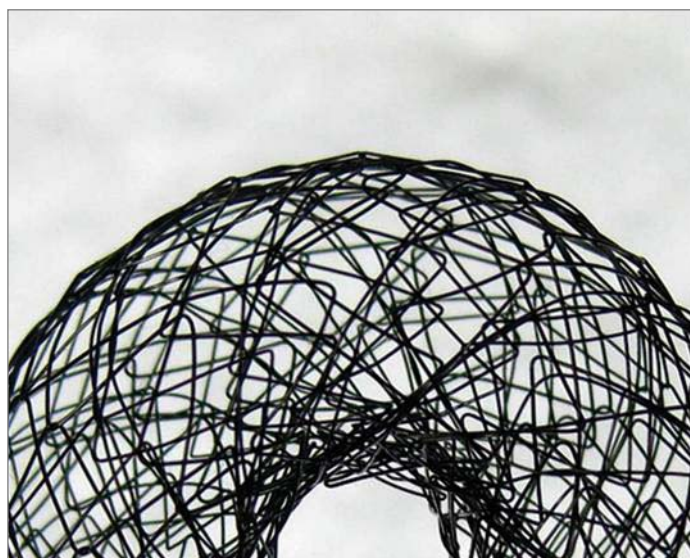


Double Covered(DC)

EGIS

The Gastrointestinal Stents

Miniscule Cells preventing Tumor in-growth



THE MINISCULE CELL SIZE of the EGIS stents is efficient to prevent tumor in-growth into the stent which can incapacitate the function of a stent. And it improves the patency rate of stenosed organs.

THE 2mm OF CELL SIZE itself is sufficiently efficient to prevent those troubles, but furthermore, the double layered structure of the EGIS stent which is crossing of two stents, peak to valley - S&G patented, creates more tiny cell size and makes the cells denser with numerous cell numbers. Also in result, the dense cells lower the chance of getting jammed of sludgy. Another remarkable feature of the EGIS is the stents is being loaded into 8Fr (Biliary) or 10Fr (Pyloric & Colorectal) even though it has numerous cells with two stents.

EGIS Biliary Stent

Single Bare Cell size	2mm
Double Bare Cell size	2mm and Both-end 4mm

EGIS Pyloric & Colorectal stent

Single Bare Cell size	2.5mm ~ 3.5mm
Double Bare Cell size	2mm ~ 3mm and Both-end 4mm ~ 6mm

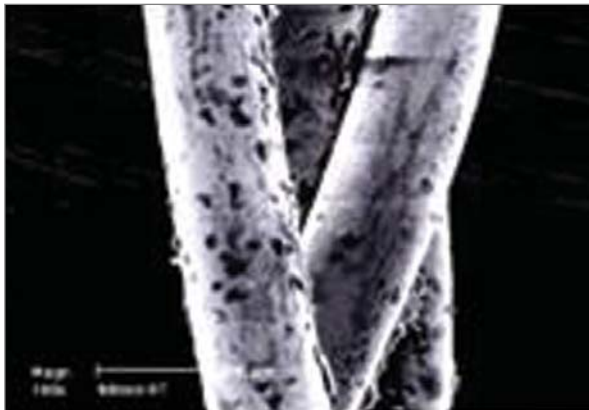
EGIS

The Gastrointestinal Stents

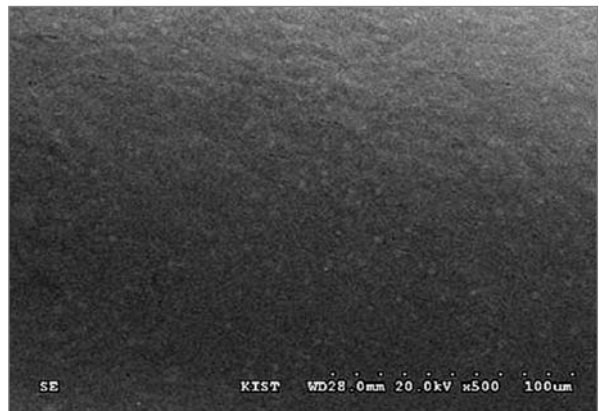
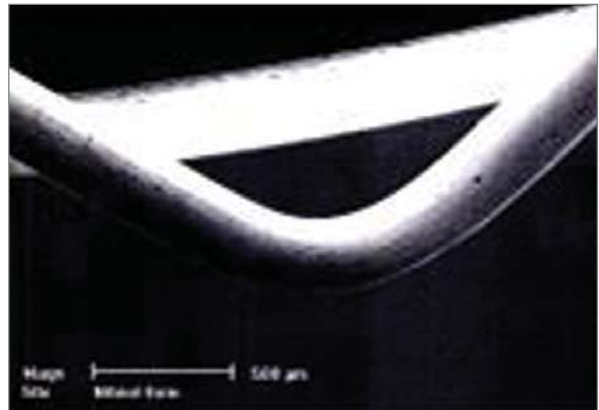
Polishing Process for Micro-Crack Removal

NITINOL is well known for high biocompatibility and it is widely used for producing medical devices such as stents, filters, and guide wires and others. But some unexpected defect is unavoidably arisen during the heating process for memorizing a form on the material, MICRO-CRACK and foreign material on surface which can affect on the durability and the biocompatibility owing to wire fracture and lowering biocompatibility. In order to resolve the problem, S&G has developed and introduced polishing process, a new break through technology on all of our products.

Before



After



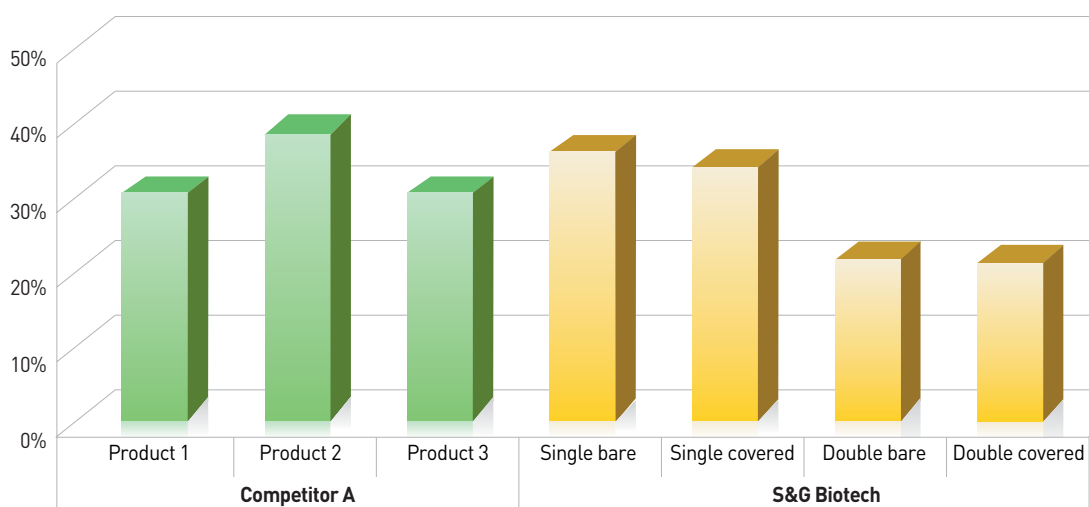
- Micro-cracks found on the stent surface before the polishing process.
- Micro-cracks left for extended period of time in the body can cause stent fracture.
- Micro-cracks are completely removed after completing the polishing process.

EGIS

The Gastrointestinal Stents

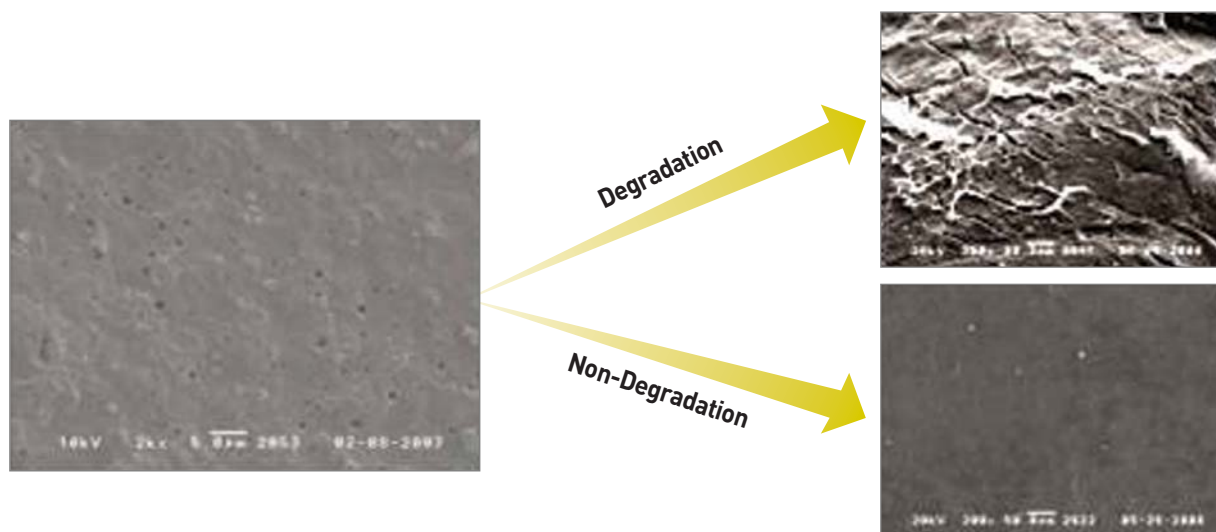
Reduced Shortening

SHORTENING is an unavoidable fact to every weaving stents because it is a physical phenomenon in their structure. And some stents' shortening reaches more than 50% of its original length. But the EGIS is designed to reduce such physical phenomenon and the design has reduced it as about 29% or less.



Non-Biodegradable Silicone Membrane

SILICONE MEMBRANE that is being used as covered material on the EGIS has advantage of Non-Biodegradable feature. The preclinical data shows that the test for decomposition which conducted for 8 weeks proved the silicon membrane was not decomposed and superior to other PU membrane. So it would efficiently act in long term in preventing tumor in-growth.



EGIS

The Gastrointestinal Stents

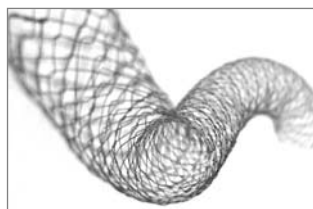
EGIS Biliary Stent



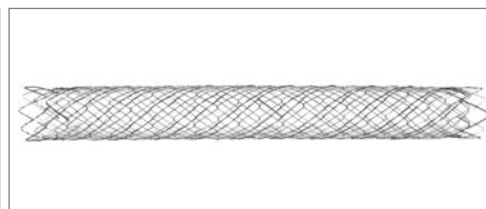
Biliary DC Stent

EGIS BILIARY STENT is being used for treatment of malignant or benign biliary stricture endoscopically and percutaneously. It improves a patency of stenosed biliary tract.

With the features and benefits of the EGIS, bile will be able to flow normally. Especially the conformability and the Flexibility brings highly flexible structure for naturally fitting into any biliary tracts. And the ability being loaded into 8Fr delivery system provides easier accessibility and operation with endoscopy.



Superior Comfomability & Flexibility

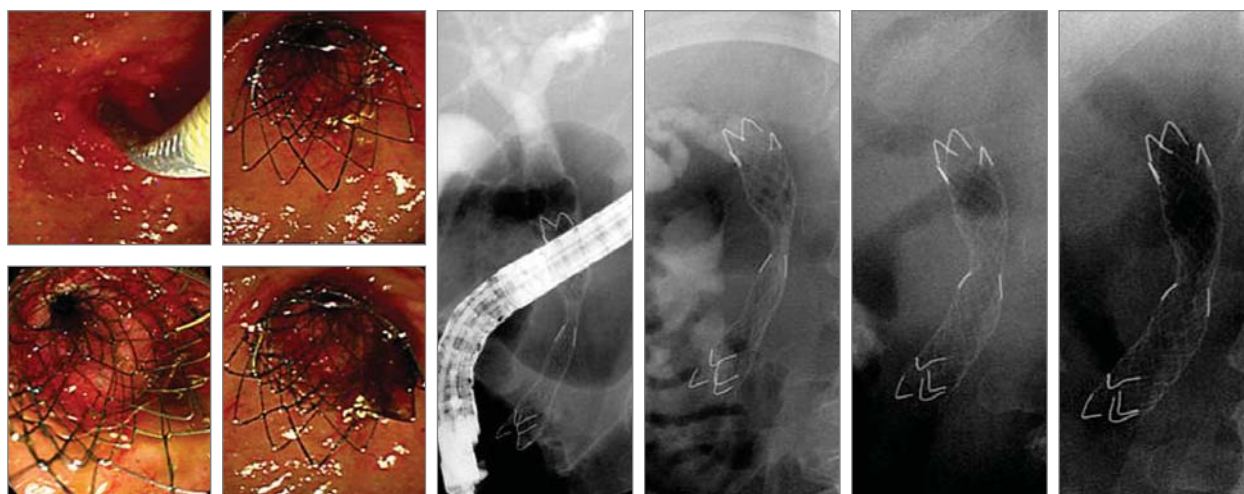


EGIS Biliary DC Stent (8mm ×10cm)

Specification of EGIS Biliary Stent

Stent		Delivery System	
Diameter	8mm, 10mm, 12mm(Single Bare)	Diameter	8Fr
Length	4cm ~ 12cm	Length	50cm, 180cm
Types	Single Bare, Single Covered, Double Bare, Double Covered		

Clinic Images



Ordering Spec.

EGIS Biliary Stent Specification

Delivery System		Biliary Stent		Model No.			
Diameter	Usable Length	Diameter	Length	Single Bare	Single Covered	Double Bare	Double Covered
8Fr	50cm	8mm	4cm	SBP08040	SCP08040	DBP08040	DCP08040
			5cm	SBP08050	SCP08050	DBP08050	DCP08050
			6cm	SBP08060	SCP08060	DBP08060	DCP08060
			7cm	SBP08070	SCP08070	DBP08070	DCP08070
			8cm	SBP08080	SCP08080	DBP08080	DCP08080
			9cm	SBP08090	SCP08090	DBP08090	DCP08090
			10cm	SBP08100	SCP08100	DBP08100	DCP08100
			12cm	SBP08120	SCP08120	DBP08120	DCP08120
		10mm	4cm	SBP10040	SCP10040	DBP10040	DCP10040
			5cm	SBP10050	SCP10050	DBP10050	DCP10050
			6cm	SBP10060	SCP10060	DBP10060	DCP10060
			7cm	SBP10070	SCP10070	DBP10070	DCP10070
			8cm	SBP10080	SCP10080	DBP10080	DCP10080
			9cm	SBP10090	SCP10090	DBP10090	DCP10090
			10cm	SBP10100	SCP10100	DBP10100	DCP10100
			12cm	SBP10120	SCP10120	DBP10120	DCP10120
		12mm	4cm	SBP12040			
			5cm	SBP12050			
			6cm	SBP12060			
			7cm	SBP12070			
			8cm	SBP12080			
			9cm	SBP12090			
			10cm	SBP12100			
			12cm	SBP12120			
	180cm	8mm	4cm	SBE08040	SCE08040	DBE08040	DCE08040
			5cm	SBE08050	SCE08050	DBE08050	DCE08050
			6cm	SBE08060	SCE08060	DBE08060	DCE08060
			7cm	SBE08070	SCE08070	DBE08070	DCE08070
			8cm	SBE08080	SCE08080	DBE08080	DCE08080
			9cm	SBE08090	SCE08090	DBE08090	DCE08090
			10cm	SBE08100	SCE08100	DBE08100	DCE08100
			12cm	SBE08120	SCE08120	DBE08120	DCE08120
		10mm	4cm	SBE10040	SCE10040	DBE10040	DCE10040
			5cm	SBE10050	SCE10050	DBE10050	DCE10050
			6cm	SBE10060	SCE10060	DBE10060	DCE10060
			7cm	SBE10070	SCE10070	DBE10070	DCE10070
			8cm	SBE10080	SCE10080	DBE10080	DCE10080
			9cm	SBE10090	SCE10090	DBE10090	DCE10090
			10cm	SBE10100	SCE10100	DBE10100	DCE10100
			12cm	SBE10120	SCE10120	DBE10120	DCE10120
		12mm	4cm	SBE12040			
			5cm	SBE12050			
			6cm	SBE12060			
			7cm	SBE12070			
			8cm	SBE12080			
			9cm	SBE12090			
			10cm	SBE12100			
			12cm	SBE12120			

EGIS

The Gastrointestinal Stents

EGIS Esophageal Stent - will be presented in late 2010

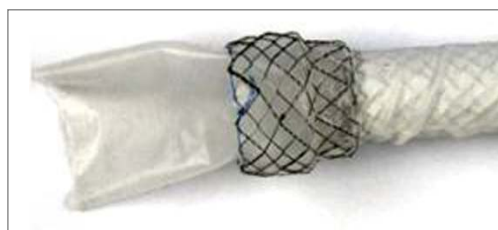


Esophageal SC Stent

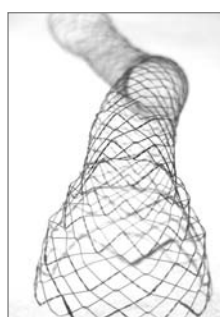
EGIS ESOPHAGEAL STENT has its own unique designing than the other competitors.

The double stepped shoulder, the dumbbell like, design will provide efficient prevention to the migration. THE e-PTFE MEMBRANE

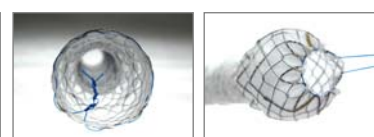
which is usually used for artificial vessel in Stent Graft provides a firm but a flexible feature while it is not perforated or tore when it is being implanted or being pulled for removal. And THE COIL BRAIDED DELIVERY SYTEM rather than normal Teflon tube would provide no kink feature.



Anti-reflux Valve



Esophageal SB Stent



Lasso on Proximal & Distal



e-PTFE Membrane

Advantages

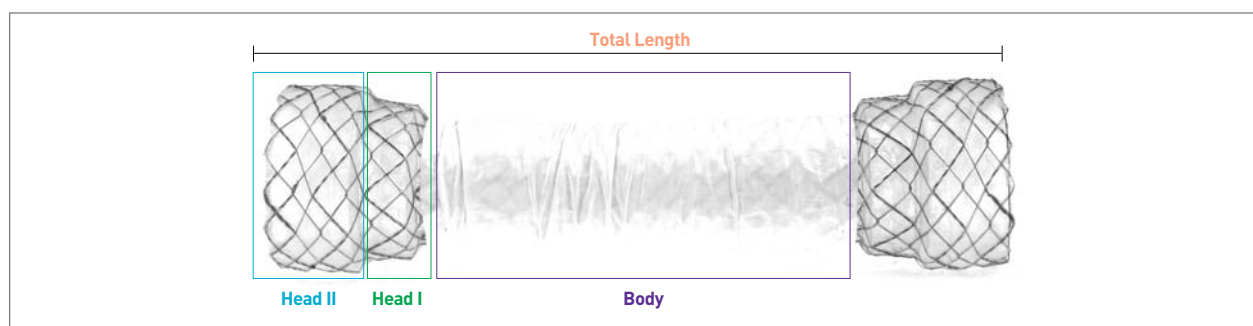
- Double shoulder structure to prevent migration.
- e-PTFE membrane to prevent perforation on membrane
- Anti-reflux design

Specification of EGIS Esophageal Stent

Stent	Body	Diameter	16mm, 18mm, 20mm
		Length	4cm, 6cm, 8cm, 10cm,12cm
	Shoulder 1	Diameter	20mm, 22mm, 24mm
		Length	Proximal 7mm, Distal 7mm
	Shoulder 2	Diameter	24mm, 26mm, 28mm
		Length	Proximal 13mm, Distal 13mm
Delivery System		Diameter	15Fr(Bare), 18Fr(Covered)
		Length	90cm
Types		Bare, Covered, Anti-reflux	

Ordering Spec.

EGIS Esophageal Stent Specification



Delivery System											Model No.		
Diameter	Usable Length	Head I			Head II			Body		Total Length	Bare	Covered	Anti-Reflux
		Dia.	Length		Dia.	Length		Diameter	Length				
			Proximal	Distal		Proximal	Distal						
Bare (15Fr) / Covered & Anti-Reflux (18Fr)	90cm	20mm	7mm	7mm	24mm	13mm	13mm	16mm	4cm	8cm	ESNC16040	ESSC16040	ESSA16040
									6cm	10cm	ESNC16060	ESSC16060	ESSA16060
									8cm	12cm	ESNC16080	ESSC16080	ESSA16080
									10cm	14cm	ESNC16100	ESSC16100	ESSA16100
									12cm	16cm	ESNC16120	ESSC16120	ESSA16120
		22mm	7mm	7mm	26mm	13mm	13mm	18mm	4cm	8cm	ESNC18040	ESSC18040	ESSA18040
									6cm	10cm	ESNC18060	ESSC18060	ESSA18060
									8cm	12cm	ESNC18080	ESSC18080	ESSA18080
									10cm	14cm	ESNC18100	ESSC18100	ESSA18100
									12cm	16cm	ESNC18120	ESSC18120	ESSA18120
		24mm	7mm	7mm	28mm	13mm	13mm	20mm	4cm	8cm	ESNC20040	ESSC20040	ESSA20040
									6cm	10cm	ESNC20060	ESSC20060	ESSA20060
									8cm	12cm	ESNC20080	ESSC20080	ESSA20080
									10cm	14cm	ESNC20100	ESSC20100	ESSA20100
									12cm	16cm	ESNC20120	ESSC20120	ESSA20120

EGIS

The Gastrointestinal Stents

EGIS Pyloric Stent



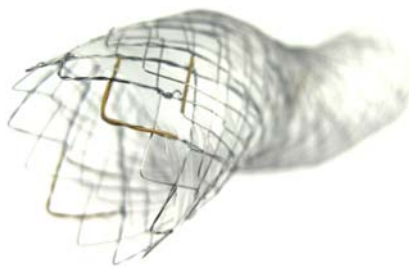
Pyloric DC Stent

EGIS PYLORIC STENT is used for patients with stricture or fistula on their upper digestive organs.

The superior radial force and conformability of the EGIS Pyloric stent will make the patient been able to intake foods normally.

The stent is designed to naturally fit into any upper gastrointestinal tracts.

THE GOLD MARKERS on three points, proximal, middle and distal aid in easier procedures with the visibility in fluoroscopy.



Gold Markers on the Stent

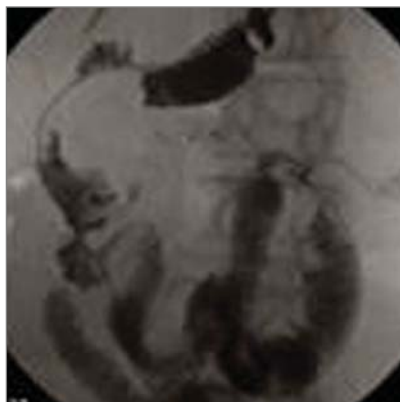


Double Covered Wire Structure

Specification of EGIS Pyloric Stent

Stent		Delivery System	
Diameter	18mm, 20mm, 22mm, 24mm	Diameter	10Fr
Length	6cm, 8cm, 10cm	Length	120cm, 180cm
Types	Single Bare, Single Covered, Double Bare, Double Covered		

Clinic Images



Ordering Spec.

EGIS Pyloric Stent Specification

Delivery System		Pyloric Stent		Model No.			
Diameter	Usable Length	Diameter	Length	Single Bare	Single Covered	Double Bare	Double Covered
10Fr	120cm	18mm	6cm	SEBP1806	SECP1806	DEBP1806	DECP1806
			8cm	SEBP1808	SECP1808	DEBP1808	DECP1808
			10cm	SEBP1810	SECP1810	DEBP1810	DECP1810
			12cm	SEBP1812	SECP1812	DEBP1812	DECP1812
	180cm	18mm	6cm	SEBE1806	SECE1806	DEBE1806	DECE1806
			8cm	SEBE1808	SECE1808	DEBE1808	DECE1808
			10cm	SEBE1810	SECE1810	DEBE1810	DECE1810
			12cm	SEBE1812	SECE1812	DEBE1812	DECE1812
	120cm	20mm	6cm	SEBP2006	SECP2006	DEBP2006	DECP2006
			8cm	SEBP2008	SECP2008	DEBP2008	DECP2008
			10cm	SEBP2010	SECP2010	DEBP2010	DECP2010
			12cm	SEBP2012	SECP2012	DEBP2012	DECP2012
	180cm	20mm	6cm	SEBE2006	SECE2006	DEBE2006	DECE2006
			8cm	SEBE2008	SECE2008	DEBE2008	DECE2008
			10cm	SEBE2010	SECE2010	DEBE2010	DECE2010
			12cm	SEBE2012	SECE2012	DEBE2012	DECE2012
	120cm	22mm	6cm	SEBP2206	SECP2206	DEBP2206	DECP2206
			8cm	SEBP2208	SECP2208	DEBP2208	DECP2208
			10cm	SEBP2210	SECP2210	DEBP2210	DECP2210
			12cm	SEBP2212	SECP2212	DEBP2212	DECP2212
	180cm	22mm	6cm	SEBE2206	SECE2206	DEBE2206	DECE2206
			8cm	SEBE2208	SECE2208	DEBE2208	DECE2208
			10cm	SEBE2210	SECE2210	DEBE2210	DECE2210
			12cm	SEBE2212	SECE2212	DEBE2212	DECE2212
	120cm	24mm	6cm	SEBP2406	SECP2406	DEBP2406	DECP2406
			8cm	SEBP2408	SECP2408	DEBP2408	DECP2408
			10cm	SEBP2410	SECP2410	DEBP2410	DECP2410
			12cm	SEBP2412	SECP2412	DEBP2412	DECP2412
	180cm	24mm	6cm	SEBE2406	SECE2406	DEBE2406	DECE2406
			8cm	SEBE2408	SECE2408	DEBE2408	DECE2408
			10cm	SEBE2410	SECE2410	DEBE2410	DECE2410
			12cm	SEBE2412	SECE2412	DEBE2412	DECE2412

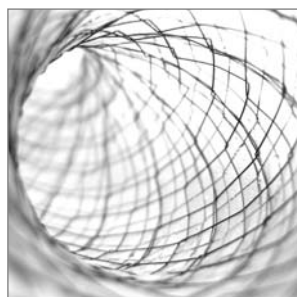
EGIS

The Gastrointestinal Stents

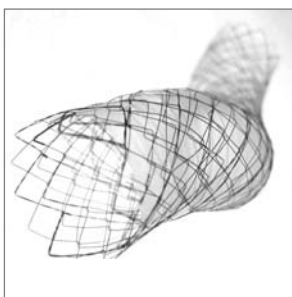
EGIS Colorectal Stent

EGIS COLORECTAL STENT is used for bowel preparation for OP or for replacement of colostomy for the patient who has stricture of either large intestine or rectum which is caused by colorectal cancer. The implantation of EGIS colorectal stent improves patency of stenosed organs.

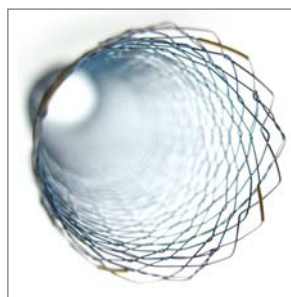
Also with natural fitting into lower digestive tracts of the EGIS Colorectal stent, patients in result is able to defecate normally.



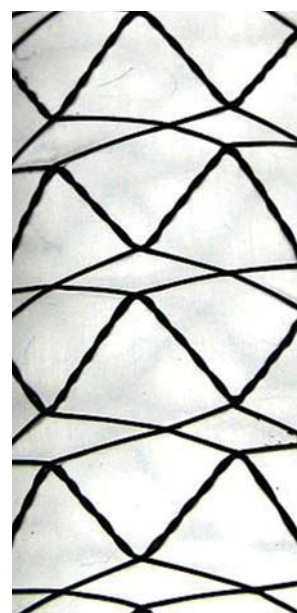
Excellent Radial Force



EGIS Colorectal DC Stent



EGIS Colorectal SB Stent

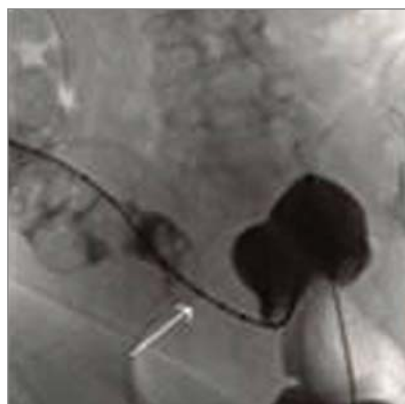


EGIS Colorectal SB Stent
weaved by patented 'K2-all

Specification of EGIS Colorectal Stent

Stent		Delivery System	
Diameter	18mm, 20mm, 22mm, 24mm, 26mm, 28mm, 30mm	Diameter	10Fr, 12Fr
Length	6cm, 8cm, 10cm	Length	80cm, 150cm, 220cm
Types	Single Bare, Single Covered, Double Bare, Double Covered		

Clinic Images



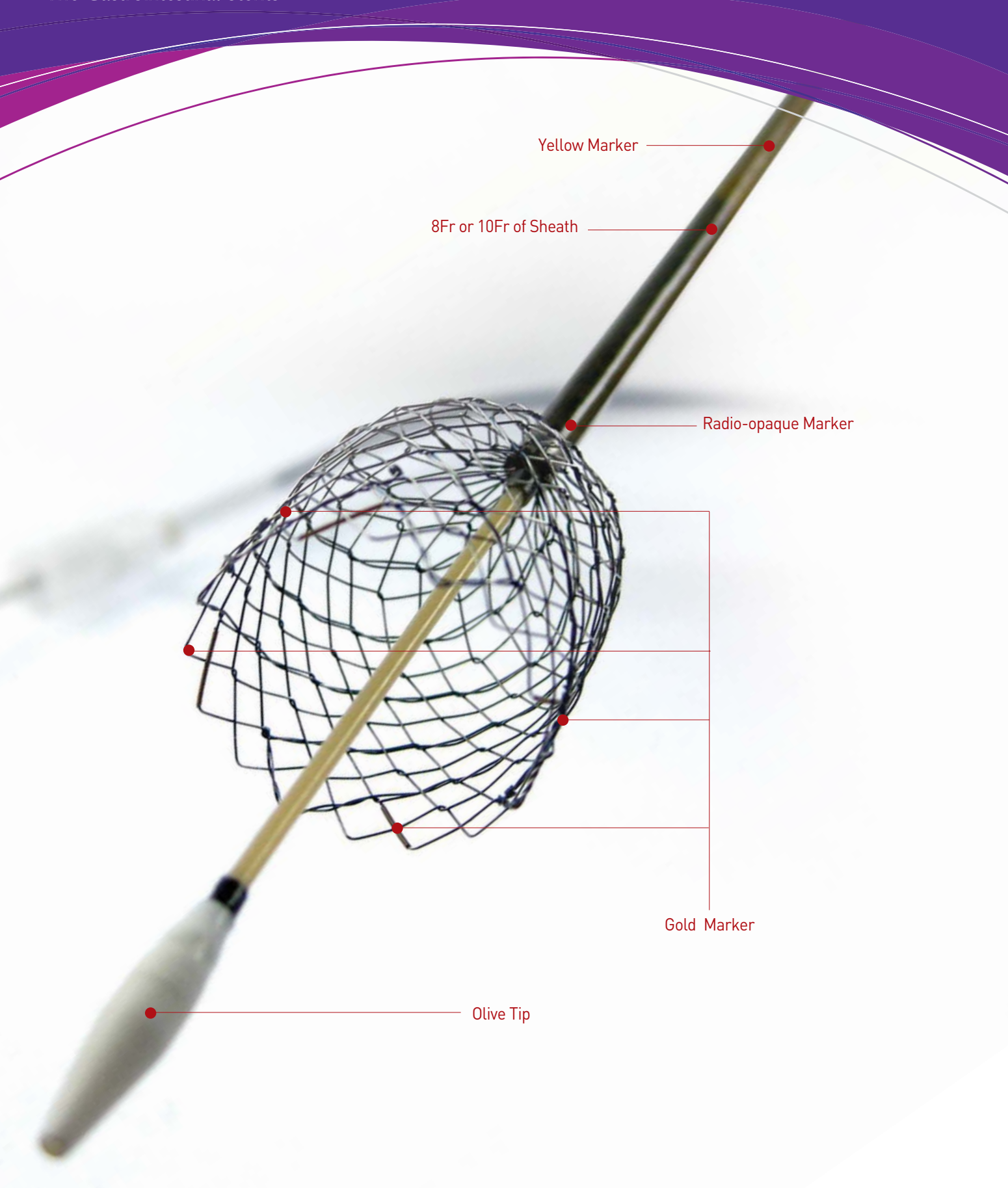
Ordering Spec.

EGIS Colorectal Stent Specification

Delivery System		Colorectal Stent		Model No.			
Diameter	Usable Length	Diameter	Length	Single Bare	Single Covered	Double Bare	Double Covered
10Fr	80cm	18mm	6cm	RSB002	RSC002	RDB002	RDC002
			8cm	RSB003	RSC003	RDB003	RDC003
			10cm	RSB004	RSC004	RDB004	RDC004
			12cm	RSB005	RSC005	RDB005	RDC005
	150cm	18mm	6cm	RSB008	RSC008	RDB008	RDC008
			8cm	RSB009	RSC009	RDB009	RDC009
			10cm	RSB010	RSC010	RDB010	RDC010
			12cm	RSB011	RSC011	RDB011	RDC011
	220cm	18mm	6cm	RSB014	RSC014	RDB014	RDC014
			8cm	RSB015	RSC015	RDB015	RDC015
			10cm	RSB016	RSC016	RDB016	RDC016
			12cm	RSB017	RSC017	RDB017	RDC017
	80cm	20mm	6cm	RSB020	RSC020	RDB020	RDC020
			8cm	RSB021	RSC021	RDB021	RDC021
			10cm	RSB022	RSC022	RDB022	RDC022
			12cm	RSB023	RSC023	RDB023	RDC023
	150cm	20mm	6cm	RSB026	RSC026	RDB026	RDC026
			8cm	RSB027	RSC027	RDB027	RDC027
			10cm	RSB028	RSC028	RDB028	RDC028
			12cm	RSB029	RSC029	RDB029	RDC029
	220cm	20mm	6cm	RSB032	RSC032	RDB032	RDC032
			8cm	RSB033	RSC033	RDB033	RDC033
			10cm	RSB034	RSC034	RDB034	RDC034
			12cm	RSB035	RSC035	RDB035	RDC035
	80cm	22mm	6cm	RSB038	RSC038	RDB038	RDC038
			8cm	RSB039	RSC039	RDB039	RDC039
			10cm	RSB040	RSC040	RDB040	RDC040
			12cm	RSB041	RSC041	RDB041	RDC041
	150cm	22mm	6cm	RSB044	RSC044	RDB044	RDC044
			8cm	RSB045	RSC045	RDB045	RDC045
			10cm	RSB046	RSC046	RDB046	RDC046
			12cm	RSB047	RSC047	RDB047	RDC047
	220cm	22mm	6cm	RSB050	RSC050	RDB050	RDC050
			8cm	RSB051	RSC051	RDB051	RDC051
			10cm	RSB052	RSC052	RDB052	RDC052
			12cm	RSB053	RSC053	RDB053	RDC053
	80cm	24mm	6cm	RSB056	RSC056	RDB056	RDC056
			8cm	RSB057	RSC057	RDB057	RDC057
			10cm	RSB058	RSC058	RDB058	RDC058
			12cm	RSB059	RSC059	RDB059	RDC059
	150cm	24mm	6cm	RSB062	RSC062	RDB062	RDC062
			8cm	RSB063	RSC063	RDB063	RDC063
			10cm	RSB064	RSC064	RDB064	RDC064
			12cm	RSB065	RSC065	RDB065	RDC065
	220cm	24mm	6cm	RSB068	RSC068	RDB068	RDC068
			8cm	RSB069	RSC069	RDB069	RDC069
			10cm	RSB070	RSC070	RDB070	RDC070
			12cm	RSB071	RSC071	RDB071	RDC071
12Fr	80cm	26mm	6cm	RSB146	RSC146	RDB146	RDC146
			8cm	RSB147	RSC147	RDB147	RDC147
			10cm	RSB148	RSC148	RDB148	RDC148
			12cm	RSB149	RSC149	RDB149	RDC149
	150cm	26mm	6cm	RSB152	RSC152	RDB152	RDC152
			8cm	RSB153	RSC153	RDB153	RDC153
			10cm	RSB154	RSC154	RDB154	RDC154
			12cm	RSB155	RSC155	RDB155	RDC155
	80cm	28mm	6cm	RSB164	RSC164	RDB164	RDC164
			8cm	RSB165	RSC165	RDB165	RDC165
			10cm	RSB166	RSC166	RDB166	RDC166
			12cm	RSB167	RSC167	RDB167	RDC167
	150cm	28mm	6cm	RSB170	RSC170	RDB170	RDC170
			8cm	RSB171	RSC171	RDB171	RDC171
			10cm	RSB172	RSC172	RDB172	RDC172
			12cm	RSB173	RSC173	RDB173	RDC173
	80cm	30mm	6cm	RSB182	RSC182	RDB182	RDC182
			8cm	RSB183	RSC183	RDB183	RDC183
			10cm	RSB184	RSC184	RDB184	RDC184
			12cm	RSB185	RSC185	RDB185	RDC185
	150cm	30mm	6cm	RSB188	RSC188	RDB188	RDC188
			8cm	RSB189	RSC189	RDB189	RDC189
			10cm	RSB190	RSC190	RDB190	RDC190
			12cm	RSB191	RSC191	RDB191	RDC191

EGIS

The Gastrointestinal Stents



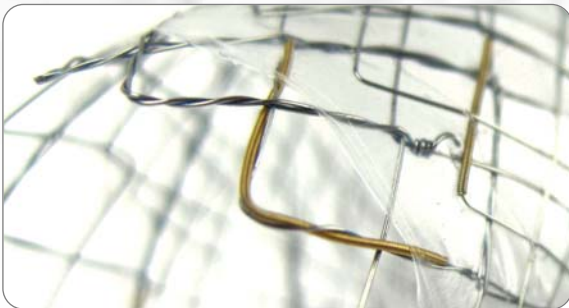
EGIS

The Gastrointestinal Stents

Yellow Marker



Gold Marker



Radio-opaque Marker



- Easy Deployment through User friendly deploy system
- Low Profile that is providing high track-ability
- Good Push-ability of braided sheath
- Kink Resistant delivery sheath
- Precise Positioning due to the Radio-Opaque marker on tip